

CHS soybean processing at Fairmont, Minnesota



Supplying soybean meal and crude oil

The CHS Fairmont soybean processing plant adds value to farmers' crops by transforming them into animal feed products and ingredients for human food products. As a farmer-owned business, CHS is unique in its close connections to growers and cooperatives that deliver soybeans to the plant 24 hours a day, seven days a week.

The Fairmont plant produces crude soybean oil, soybean meal and soybean hulls. The soybean meal and hull products are primarily used for animal feed in the region, although some of the meal is marketed nationally or exported, particularly to Latin America. The crude oil is transported to the CHS soybean processing facility in Mankato, Minn., for further refining to produce refined edible soybean oils.

To accommodate the growing demand for soybean oil, the facility completed an expansion and renovation project in August 2021. The project increased the plant's soybean crush capacity and annual soybean purchases by 30%, enhanced product quality, and optimized soybean refinery production at Mankato.

Annual volume

72 million
bushels of soybeans processed



825 million
pounds of crude soybean oil produced



1.5 million
tons of soybean meal produced



150 thousand
tons of soybean hulls produced



Processes

1 De-hull, crack, flake, grind and extract oil from soybeans



2 Deliver the oil to Mankato for further processing

Rail



7,500
hopper-bottom meal cars shipped/year

Served by Union Pacific railroad

Soybean receiving

24/7
receiving

250
trucks/day on average



5.5 million + **3.5 million**
bushels of flat storage + bushels of upright storage

= 9 million bushels of storage

Plant built in
2003




Site size
200 acres

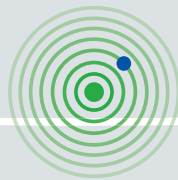
Number of employees
63

Committed to serving growers, food safety and community giving

Local cooperatives and growers deliver soybeans directly to the CHS processing plants at Fairmont and Mankato. Both plants receive beans 24/7 for customer convenience.

KEY

-  CHS Fairmont processing plant
-  Primary soybean origination
-  CHS Mankato processing plant



Our long-standing community involvement includes donating a wheelchair-accessible swing and helping add wheelchair-accessible court surfaces in Fairmont parks. We also contribute time and resources to organizations focused on local food assistance, youth leadership and community safety. In addition, CHS is a founding and ongoing sponsor of the annual Kiwanis Holiday Lights in nearby Mankato, which is a regional attraction.

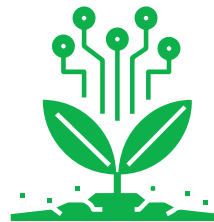
Dedicated to safety, quality and efficiency

As a leading global agribusiness owned by North American farmers, CHS has a long history of quality soy protein solutions to help customers grow their businesses. We source commodities daily and continually invest in people, products and processes at our plants to serve this market today and in the future.

Established and startup food and feed brands trust CHS for quality ingredients that are delivered on spec and on time. With our deep involvement in the global commodity markets, we can also help customers with risk management options related to buying and inventory strategies.

CHS has become a leader in incorporating new technologies into our oilseed processes, in part because we have a dedicated on-site engineering department that is able to develop specialized methodology.

We also maintain a strong environmental and stewardship focus. Our processing plants have reduced emissions to well below mandated levels, and we have found ways to conserve water, electricity and other resources. We have also virtually eliminated use of local landfills by recycling barrels, drums, paper, cardboard, plastic, waste oil and other materials.



CHS proudly supports many industry trade organizations



Certifications

- Kosher

